

H. Jimenez
TRADICIÓN con INNOVACIÓN

COLECCIÓN CAMALEÓN

Bass Guitar Owner's Manual





COLECCIÓN CAMALEÓN

Thank you for your purchase of an H. Jimenez Camaleón Collection Bass guitar! You now own an incredibly versatile and adaptable bass guitar with many possible tones and specific player-preferred features....so we call the collection Camaleón! (Chameleon)

This manual provides an overview and explanation of your bass's features, specifications, tonal options, and some maintenance tips to provide enjoyment from your bass guitar for many years.

We hope you enjoy your new H. Jimenez Camaleón Bass Guitar!

If you like, you can tag us in a picture of you with it that we can share.

Table of Contents

General information:

Bass Anatomy	3
Tuning and Strings	4
Notes on the Fingerboard	5
General care overview	6
String action and truss rod adjustment	8
String care and when to change	10
Changing bass strings	10

Model Specific Run Down: (Features of each model and electronic explanation)

LBS4-BK / LBS5-BK Glossy Black	11
LBS4-VB / LBS5-VB Glossy Vintage Burst Bass	12
LBS4-GT Glossy Gold top Bass	13
LBS5-GT Glossy Gold top Bass	14
LBS4-VB Glossy Walnut top Bass	15
LBS5-VB Glossy Walnut top Bass	16
LBS4-VB Satin Spalt Burst Bass	17
LBS5-VB Satin Spalt Burst Bass	18
Moonwalk® gig bag features	19
Limited Lifetime Warranty	20
H. Jimenez socials and website	20

ANATOMY OF A BASS GUITAR



1. Headstock
2. Tuning Machines
3. Truss rod cover and truss rod
(4mm Hex wrench)
4. Nut (NuBone®)
5. Frets (24)
6. Fingerboard
7. Fingerboard inlay
8. Neck
9. Neck side position markers
10. Body
11. Pickups
(see specific model page for more details)
12. Instrument Control Panel
(see specific model page for more details)
13. Strap buttons (3)
14. Bridge
(see specific model page for more details)
15. Output jack
16. Arm bevel (Front)
17. Serial number (back)

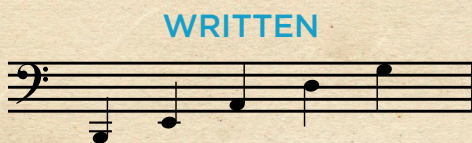
Tuning Your Bass and Stretching the Strings

H. Jimenez Camaleón basses have a comfortable scale length. The 4 strings have a 34" scale and a bridge string spacing of .737" / 18.77 mm. The 5 strings have a 35" scale and a bridge string spacing of .706" / 17.9 mm. Both models have a 24 fret two octave neck.

Four string bass tuning is EADG



Five string bass tuning is BEADG



Strings

Camaleón 4 string basses are strung with D'Addario® EXL-165 (45-105)

Regular Light Top/Medium Bottom 4-String Bass Strings

D'Addario's XL Nickel strings are known for their sonic clarity, robust lows that resonate and making them the go-to choice for bassists the world over. Crafted with a high carbon steel core and wound with nickel-plated steel wrap wire, these strings sing with snug lows paired with a sprightly, singing top end. Proudly crafted in D'Addario's New York, USA facility.

D'Addario XL Nickel bass strings are recognized world-wide for their pristine sound, and profound lows that command attention. They start with a high carbon steel core and wrap with nickel plated steel wrap wire for a consistently bright tone and smooth playability. Proudly crafted in D'Addario's New York, USA facility.

Camaleón 5 string basses are strung with D'Addario® EXL170-5SL (45 - 130)

Regular Light 5-String Long Scale Bass Strings: Low B 130 E 100 A 80 D 65 G 45 High

It is a good idea to keep your bass tuned to standard tuning i.e. A440. Keeping it in standard tune helps the strings stretch and settle in. It also helps the neck adjust to the standard tuning tension. It is normal that new strings will need several tunings initially before they begin to fully stabilize.

Once tuned, gently pull each string out from the body above the pickups and in several spots on the neck in front of the fingerboard several times. Then retune and repeat the stretching process. After several stretches and tunes, eventually, the strings will settle and require only a light tuning touch up before playing.

We highly recommend that you continue to use D'Addario strings to maximize your bass performance and feel. However, if you decide to change strings that have different gauges than it came with, you may need another set up and intonation done to keep the bass in top condition.

Notes on the Fingerboard: For beginners, here are the notes on the fingerboard to help you easily locate the notes you are looking for on any string. Notice some notes have two names such as A#/Bb. The notes with two names sound the same to your ear, but there are different names based on the key of the song. For example, if you are playing in a Sharp # key it would be A#, in a Flat key, it would sound the same but have the name Bb.

4 string fingerboard notes up to fret 12

5 string fingerboard notes up to fret 12

Open strings, no fingers →

	E	A	D	G
Fret 1 ↓	F	A# Bb	D# Eb	G# Ab
	F# Gb	B	E	A
	G	C	F	A# Bb
	G# Ab	C# Db	F# Gb	B
	A	D	G	C
	A# Bb	D# Eb	G# Ab	C# Db
	B	E	A	D
	C	F	A# Bb	D# Eb
	C# Db	F# Gb	B	E
	D	G	C	F
	D# Eb	G# Ab	C# Db	F# Gb
	E	A	D	G

Open strings, no fingers →

	B	E	A	D	G
Fret 1 ↓	C	F	A# Bb	D# Eb	G# Ab
	C# Db	F# Gb	B	E	A
	D	G	C	F	A# Bb
	D# Eb	G# Ab	C# Db	F# Gb	B
	E	A	D	G	C
	F	A# Bb	D# Eb	G# Ab	C# Db
	F# Gb	B	E	A	D
	G	C	F	A# Bb	D# Eb
	G# Ab	C# Db	F# Gb	B	E
	A	D	G	C	F
	A# Bb	D# Eb	G# Ab	C# Db	F# Gb
	B	E	A	D	G

General Care: Treating, Cleaning and Polishing

When possible, wash your hands before you rehearse or perform with your bass. This will help it stay cleaner and help prevent the build-up of sweat, dirt, and skin oils. After playing, wipe the instrument top to bottom to help keep the fingerprints off of it, prolong the life of your strings, and keep the hardware and pickups in good condition.

A Suggested Cleaning Kit:

1. **Several soft lint free cloths ...** Such as an old soft t-shirt, sweatshirt (without printing) or a microfiber cloth.
2. **Toothbrush ...** For occasionally dusting of hard-to-reach bridge components or around the machine heads etc.
3. **Instrument polish (NOT furniture polish) ...** Keep instrument looking good and grime free
4. **A small screwdriver set with Philips and Flat head screwdrivers ...** To keep all mounting screws tight
5. **Sharp pencil ...** For lubricating the nut grooves
6. **0000 steel wool ...** To gently remove build up on the fingerboard
7. **Small bottle of lemon oil or bore oil ...** For fingerboard treatment

In addition to wiping the bass down each time you play and to keep your bass guitar in the best condition, sometimes it is necessary to additionally clean, polish, and treat the fingerboard and do other minor maintenance.

Old T-shirts, sweatshirts and microfiber cloths are excellent choices for polish cloths since they typically do not have any buttons or harsh stitching that can scratch the bass.

Finishes: Some glossy finishes can show fingerprints very easily. Wiping down a glossy instrument will keep it looking great. However, satin finishes require less polishing for fingerprints. A satin bass should be wiped down after playing but keep the polish to a minimum since in time, it can turn a satin instrument glossy.

Polish: IMPORTANT - Use instrument polish that is specially formulated for string instrument finishes. Guitar polish is easily available at local music stores or online sources. DO NOT use any furniture or car polishes, waxes, or anything that contains silicone or harsh chemicals such as a window cleaner or bleach that can damage the instrument's finish.

Fingerboards: Sometimes fingerboards can become caked with excess sweat, dirt, and skin oils. Whenever you change strings, closely inspect the fingerboard for build-up. If you find some, remove it by lightly scrubbing with 0000-gauge steel wool on the

fingerboard and frets. Do not use any harsh blade tools to scrape or potentially gouge the fingerboard. Only use 0000-gauge steel wood to remove residue and make the fingerboard suitable for further treatment.

Treat the fingerboard as needed depending on the fingerboard wood and the climate you live in. If the fingerboard appears dry it should be treated. **Note:** There are sealed and open pore fingerboards. H. Jimenez basses with Maple fingerboards for example, are sealed with a satin finish and only will need occasional cleaning - and additional treatment is not needed. However, open pore fingerboards such as Wenge wood, occasionally need a very light coat of lemon oil, mineral oil (available at home improvement stores) or bore oil (used on wood clarinets - available at most music retailers). Simply apply a light coat of these safe, mild oils on the fingerboard, allow it to soak in, and wipe away excess. This treatment will restore the wood's luster, rehydrate it, and give it a gentle protective coating to help keep it safe from the elements.

Metal Hardware: Wipe any metal hardware (tuners, knobs, bridge etc) after each use with a soft lint free cloth. This will keep salt from sweat, oils, and dirt from building up and potentially causing pitting of the hardware finish.

Nut Grooves: Keep the nut grooves lubricated with graphite (a dry lubricant) simply from a sharp pencil whenever strings are changed. Just a few quick swipes of a pencil in the nut grooves will easily help prevent the strings from sticking in the nut slots and will enhance tuning accuracy.

Screws: Through time and with the instrument's vibration, it is possible that screws can work loose. This can possibly cause rattles or other issues. Whenever you change strings, take an appropriate screwdriver type, and size and check the tightness of screws.

Be careful not to overtighten or strip out any screw heads, but simply check that the screws are snugly in place. Places to check include: the large screws in the back plate of the neck cavity (bolt on models only), the control cavity cover on the back of the body, the truss rod cover on the front of the headstock, the tuning machine mounting screws on the back of the headstock, strap buttons and even the bridge mounting screws.

Storage: Providing the temperature and humidity is not extreme, you can safely temporarily store your bass guitar on a good quality stand or a properly mounted wall hanger. (We suggest the Hercules® brand, but there are several options on the market.)

But for ongoing storage and to transport your bass easily and safely, utilize your deluxe MoonWalk® gig bag provided with the bass guitar. However, if you choose to purchase a hardshell case, your H. Jimenez Camaleón bass is designed so that it should easily fit in most after-market bass guitar case options.

String Action and Truss Rod Adjustment

“Action” on a stringed instrument refers to the height of the strings off of the fingerboard. A higher action decreases the playability and action that is too low can result in buzzing from the strings touching the frets. Each H. Jimenez bass is set up with optimum action before it is sent out, but if you prefer a lower action, we recommend taking it to where you purchased it or to an experienced repair person who can adjust the action to your playing preference.

The humidity and temperatures in your area may slightly affect the neck. It may take a while for your bass to adjust and settle into the climate of its new surroundings. Monitor it and if you notice the strings are too high or too low to the fingerboard, have it professionally adjusted and re-set up if needed. This is a standard part of string instrument care and maintenance and will not need to be done often.

A truss rod is a metal rod in the neck under the fingerboard in many types of string instruments. We adjust each for optimum playability but climate, humidity changes, different string gauges can occasionally require a truss rod adjustment.

A truss rod’s function is to counterbalance the string tension, ensuring the neck remains straight and stable. By tightening the rod, the neck straightens, which may slightly lower the strings, affecting the action. Loosening the rod permits the neck to bow, potentially raising the action. **NOTE:** a truss rod adjustment affects neck relief, not to adjust the action directly. Action adjustments are achieved by the combined geometry of proper nut groove heights, optimal truss rod neck relief and the bridge saddles. If you are familiar with truss rod functions, you can easily adjust the neck as needed. However, if you are not familiar with truss rod adjustments, we suggest you seek a professional luthier to avoid over adjustment and potentially damaging your bass guitar.

To play properly, string instruments need a slight bow (relief) in the neck to allow the strings to clear each fret. However, if the bow increases too much or reverses to a back bow (warp), the playability is affected. A truss rod corrects a string instrument’s neck curvature slightly. H. Jimenez uses a standard 4mm hex wrench adjustment located under a small cover on the front of the headstock.

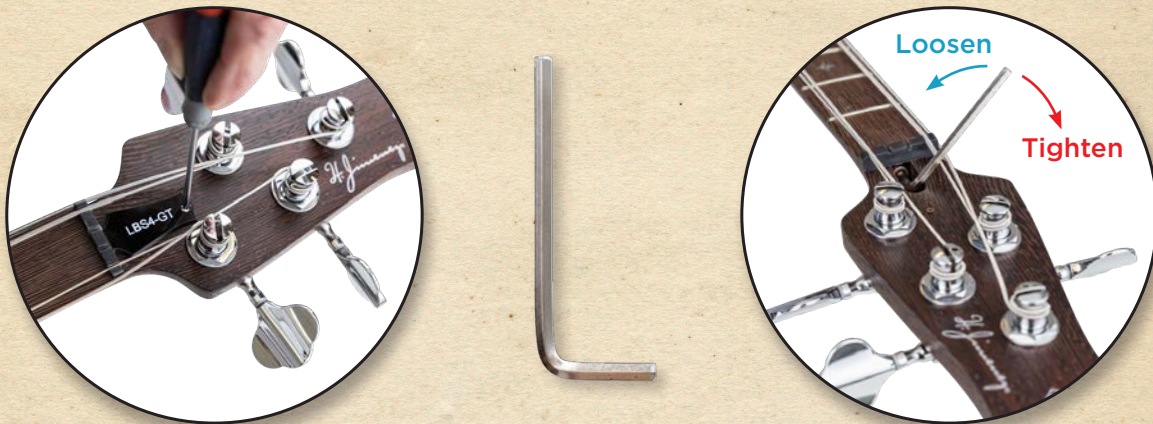
1. Bow (the neck over-bending)

A bowed neck occurs when the neck has too much relief or curvature affecting playability by making the strings too high off of the fingerboard.

2. Warp (neck hump backward)

Warp occurs when the neck has a hump and, in some cases, causes strings to “fret out” or string buzz when played.

3. Adjusting a truss rod for either of these issues is not difficult, but it should be done with CAUTION. Start with only a quarter turn of the truss rod nut and allow time for the neck to adjust. (Apply another quarter turn if needed). If the truss rod is tightened or loosened too much, the problem can be overcorrected and potentially create a more severe problem. Some players like a slightly higher action and others want a very close action. As a general rule, H. Jimenez bass action is set up close to 3mm on the G string at the 12th fret and 4.5mm on the low E string at the 12th fret. Your preference may vary, but the Camaleón series basses are adaptable.



String Care and When to Change

From the factory, your H. Jimenez bass is equipped with D'Addario strings for optimal tone, projection, and intonation.

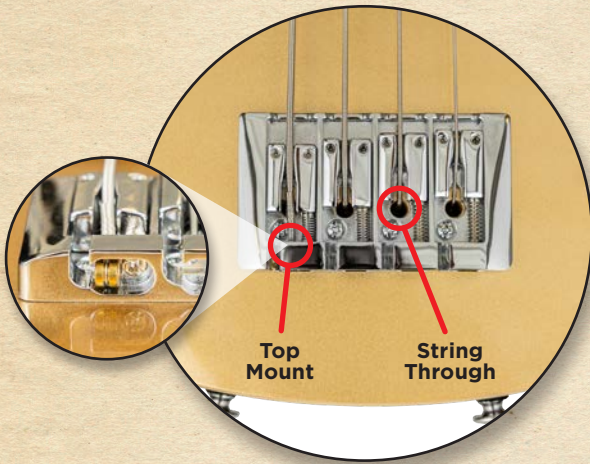
After each practice or performance, thoroughly wipe down the strings to remove skin oils, dirt and/or sweat with a soft dry cloth. This habit will prolong the life of your strings.

Depending on how much you play and naturally in time, the life of your strings will eventually fade. As strings age, you may notice a dull or flat tone, sustain becoming shorter, or even notes that sound out of tune on some notes but not on others. These are all signs that your strings should be changed.

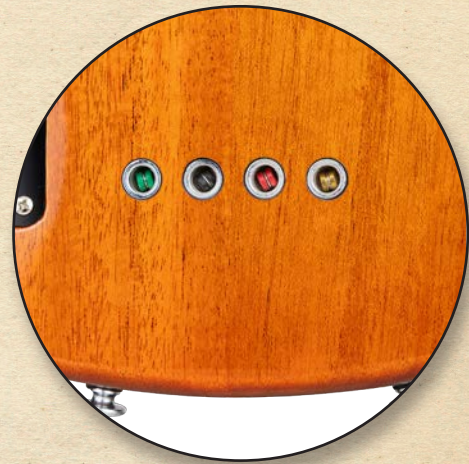
When changing strings is necessary, we suggest you continue to use D'Addario strings to maximize your H. Jimenez bass performance, ensure good tone and optimal playability.

Changing Strings:

Regarding bridge options, the black BK and vintage burst VB bridges utilize a traditional top mount bridge. However, the gold top GT, walnut top WT and spalt burst SB basses offer a bridge that allows for strings through the body, top mount or a player preferred combination. Depending on your style of playing or personal preference for tone you may want to alter the stringing style.



Top mount (as seen here on the low E string) by running the string through the end of the bridge, to the tuner - *or* string through, by taking the string through the body - depending on your model and preference.



View of back of the bass when the strings are strung through the body.

All of the Camaleón Bass tuning machines have a center hole design for the string end to tuck neatly inside to keep the headstock clean and without string ends. Simply clip the string approximately 1½" beyond the post and put the string end in the center hole of the tuner and turn it to wrap string windings below each of the previous windings to help stabilize tuning.



COLECCIÓN CAMALEÓN

LBS4-BK 4 string / LBS5-BK 5 string Black Gloss Bass Guitars

The H. Jimenez Camaleón LBS4-BK 4 string and LBS5-BK 5 string bass guitars define sleek elegance. These striking basses are high gloss black with full single ply white binding on the headstock, neck, and body. They have a flat top double cutaway body design with comfortable arm and back bevels. They feature a glossy black bolt-on Maple neck with a 24 fret Wenge fingerboard with H. Jimenez DayStar inlays and sleek Black hardware. They feature a comfortable low profile NuBone® nut width, an adjustable truss rod, Passive P/J style open pole pickups with two volumes (one for each pickup) and one master tone control, and they include a deluxe padded Moonwalk® gig bag.

- Glossy Black Flat top body with bevels
- Bolt on Glossy black Maple neck
- Wenge fingerboard with white H. Jimenez Daystar™ Inlays
- 24 frets (4 str = 34" scale/5 str = 35" scale)
- NuBone® nut width (4 str = 38mm/5 str = 45mm)
- Full White ABS binding
- Black Hardware
- Passive P/J style open pole pickups
- Rotary knobs: 2 volume & 1 master tone
- Top mount bridge
- 3 strap buttons
- D'Addario® strings
- Moonwalk® Deluxe Gig Bag

*See Page 19 for More Details



LBS4-BK 4 string



LBS5-BK 5 string



COLECCIÓN CAMALEÓN

LBS4-VB 4 string / LBS5-VB 5 string Glossy Vintage Burst Bass Guitars

The H. Jimenez Camaleón LBS4-VB 4 string and LBS5-VB 5 string bass guitars give a nostalgic nod to days past with a glossy 3 tone Vintage burst finish on the body front and back with white body binding. They have a flat top double cutaway body design with comfortable arm and back bevels. They feature a bolt-on satin Maple neck, a 24 fret Maple fingerboard with black H. Jimenez DayStar inlays and Chrome hardware. They feature a comfortable low profile NuBone® nut width, an adjustable truss rod, Passive J/J style open pole pickups with two rotary volumes (one for each pickup) and one master rotary tone control and includes a deluxe padded Moonwalk® gig bag.

- Glossy 3 tone Vintage Burst Flat top body with bevels
- Bolt on Satin Natural Maple neck
- Maple fingerboard with black H. Jimenez Daystar™ Inlays
- 24 frets
(4 str = 34" scale / 5 str = 35" scale)
- NuBone® nut width
(4 str = 38mm / 5 str = 45mm)
- White ABS binding
- Chrome Hardware
- Passive J/J style open pole pickups
- 2 volume & 1 master tone
- Top mount bridge
- 3 strap buttons
- D'Addario® strings
- Moonwalk® Deluxe Gig Bag

*See Page 19 for More Details



LBS4-VB 4 string



LBS5-VB 5 string



COLECCIÓN CAMALEÓN

LBS4-GT 4 string / LBS5-GT 5 string Glossy Gold Top Bass Guitars

The H. Jimenez Camaleón 4 and 5 string Gold Top bass guitars provide a dazzling Glossy Gold Sparkle finish on a flat top body, complemented by smooth body bevels for enhanced comfort. The body is crafted from high-quality natural mahogany and features cream ABS single-ply binding. The bolt on neck, made from satin-finished Wenge offers a 24-fret Wenge fingerboard adorned with unique H. Jimenez DayStar inlays. Designed for superior resonance, the strings run through the body, or they can be top mounted. Equipped with all chrome hardware, these gold top basses have a comfortable low profile NuBone® nut width. The beefy single Humbucker open pole pickup is set up for versatility by offering a coil tap mini switch alongside a mini switch for active and passive EQ options. These exquisitely adaptable basses include a deluxe padded Moonwalk® gig bag for protection and easy transport.

Active EQ: This bass is equipped with an active/passive EQ section. Active EQ circuits require power from an onboard battery while passive circuits don't require power. Active EQ controls enable both cuts and boosts in tonal frequencies.

This H. Jimenez Camaleón bass guitar comes with mini switch to activate the active EQ or to play passively. The active EQ pre-amp is triggered by a mini switch in the control area.

Mini Switch ON: (NOTE: Place the mini switch in the ON (down when in playing position) when plugging in, if passive operation is preferred, pull toggle the mini switch to the up position (OFF) after the amplifier is powered on.) A slight output boost may be noticeable. This switch activates the three rotary tone controls (Bass, Middle, and Treble). Being active, these controls allow you to increase or decrease bass, middle, or treble frequencies as per your liking.

Turning the EQ knobs, you'll feel a notch at the midpoint (center detent). This notch signifies the "Flat" EQ position. With the pre-amp engaged, you can easily create a variety of tones by adjusting these three Active EQ rotary knobs.

Mini Switch OFF: the bass becomes passive, and the rotary EQ knobs are deactivated. Some musicians prefer the unaltered tone directly from the pickup and utilize their foot pedals and/or amplifier for tone adjustments. This switch also provides a fail-safe option, allowing performances to continue uninterrupted should the battery fail - all it takes is a flick of the switch!



LBS4-GT 4 string

LBS4-GT 4 string /LBS5-GT 5 string Glossy Gold Top Bass Guitars (cont.)

Coil Tap Mini Switch: Additionally, this very versatile bass model features a coil tap mini switch. Coil tapping simply stated, means cancelling or “tapping” half of the pickup output. Since this bass is equipped with a humbucker (double coil) style pickup, the coil tap switch cancels half of the pickup output making it a single coil.

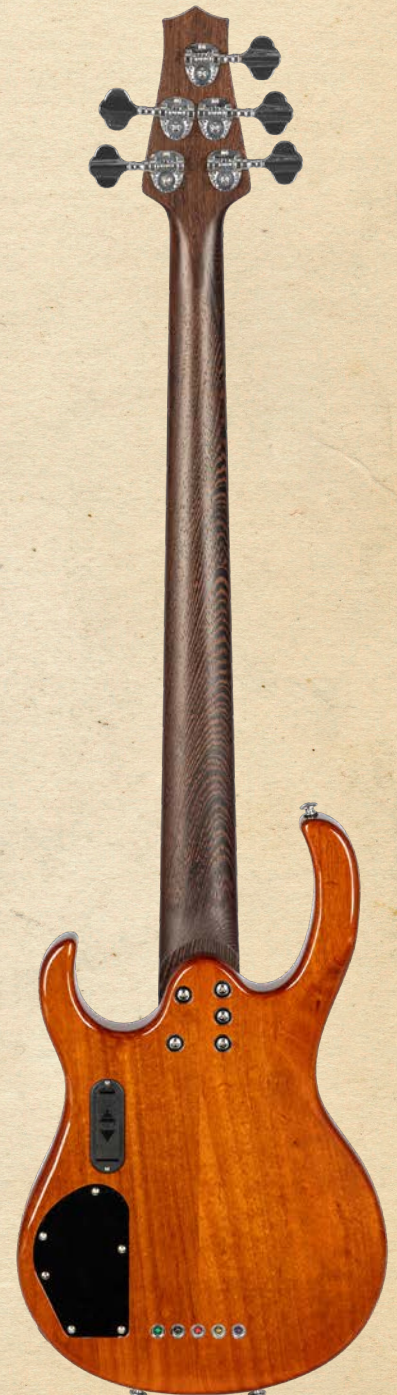
The resulting sound of the single coil pickup is a slightly brighter tone, and some say a more “vintage” tone overall. The coil tap feature can be used in conjunction with the Active or Passive modes of EQ which offers a huge assortment of possible tones at your fingertips. Experiment to see what you like best!

- Glossy Gold Flat top body with bevels
- Bolt on Satin Natural Wenge neck
- Wenge Fingerboard with white H. Jimenez Daystar™ Inlays
- 24 frets (4 str = 34" scale / 5 str = 35" scale)
- NuBone® nut width (4 str = 38mm / 5 str = 45mm)
- Cream ABS body binding
- Chrome Hardware
- 1 Open Pole Humbucker pickup
- 1 vol, Passive + toggle for Active 3 band EQ + 1 toggle to coil tap
- Top mount bridge or string through body
- 3 strap buttons
- String through body or top load bridge
- D'Addario® strings
- Moonwalk® Deluxe Gig Bag

*See Page 19 for More Details



LBS5-GT 5 string



COLECCIÓN CAMALEÓN

LBS4-WT 4 string/LBS5-WT 5 string Glossy Walnut top Bass Guitars

The LBS4-WT 4 string and LBS5-WT 5 feature a glossy, beautifully natural Walnut cap on an Ash body. The bolt on neck is Wenge with a 24-fret fingerboard decorated with H. Jimenez DayStar inlays.

The bridge offers two stringing options: through the body or top-mounted. It is equipped with all black hardware and has a comfortable low-profile NuBone® nut width.

Two wide Soap Bar style pickups are the tonal center of this bass which is enhanced by an active EQ via a mini toggle switch, and when combined with the rotary pickup blend control offer a very wide range of tonal possibilities.

Each H. Jimenez bass guitar comes with a deluxe padded Moonwalk® gig bag for protection and easy transportation.

Rotary Pickup Blend Knob - This bass in the Camaleón Collection is equipped with a rotary pickup blend knob which provides a versatile way to shape your bass guitar's tone by controlling the balance between the two pickups. If you turn the pickup blend knob clockwise, you get more of the bridge pickup which is a brighter more aggressive tone. If you turn it counterclockwise, it gives more signal from the front pickup for a deeper warmer tone. By rotating the pickup blend knob, you can have many different tones quickly and easily.

Active EQ: This bass is equipped with an active/passive EQ section. Active EQ circuits require power from an onboard battery while passive circuits don't require power. Active EQ controls enable both cuts and boosts in tonal frequencies.

This H. Jimenez Camaleón bass guitar comes with mini switch to activate the active EQ or to play passively. The active EQ pre-amp is triggered by a mini switch in the control area.



LBS4-WT 4 string



LBS4-WT 4 string/LBS5-WT 5 string Glossy Walnut top Bass Guitars (cont.)

Mini Switch ON: (NOTE: Place the mini switch in the ON (down when in playing position) when plugging in, if passive operation is preferred, pull toggle the mini switch to the up position (OFF) after the amplifier is powered on.) A slight output boost may be noticeable. This switch activates the three rotary tone controls (Bass, Middle, and Treble). Being active, these controls allow you to increase or decrease bass, middle, or treble frequencies as per your liking.

Turning the EQ knobs, you'll feel a notch at the midpoint (center detent). This notch signifies the "Flat" EQ position. With the pre-amp engaged, you can easily create a variety of tones by adjusting these three Active EQ rotary knobs.

Mini Switch OFF: the bass becomes passive, and the rotary EQ knobs are deactivated. Some musicians prefer the unaltered tone directly from the pickup and utilize their foot pedals and/or amplifier for tone adjustments.

- Glossy Natural Walnut Flat top American ash body with bevels
- Bolt on Satin Natural Wenge neck
- Wenge fingerboard with white H. Jimenez Daystar™ Inlays
- 24 frets (4 str = 34" scale / 5 str = 35" scale)
- NuBone® nut width (4 str = 38mm / 5 str = 45mm)
- No binding
- Black Hardware
- 2 Wide Soapbar pickups
- 1 vol, 1 pickup blend knob w/ Passive or mini toggle for Active 3 band EQ
- Top mount bridge or string through body
- 3 strap buttons
- String through body or top load bridge
- D'Addario® strings
- Moonwalk® Deluxe Gig Bag

*See Page 19 for More Details



LBS5-WT 5 string

COLECCIÓN CAMALEÓN

LBS4-SB 4 string / LBS5-SB 5 string Satin Spalt Burst Bass Guitars

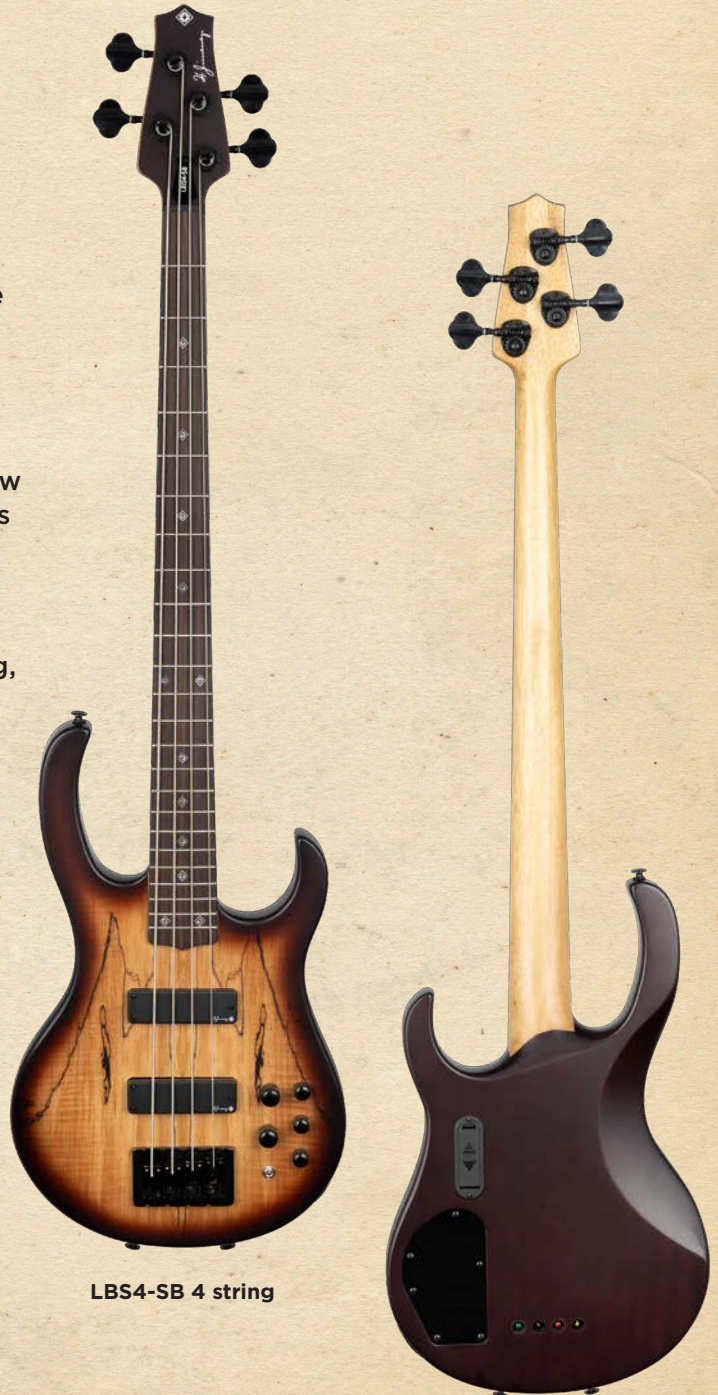
The H. Jimenez Spalt Burst 4 and 5 string bass guitars are a wonderful mix of player preferred features and excellent craftsmanship. Its SET NECK design ensures maximum sustain, while the flat top body is adorned with comfortable bevels for an ergonomic playing experience.

They feature all black hardware with a striking Satin Spalted Maple top that cascades to brown burst edges over a Mahogany body. The smooth Satin Maple neck is topped off with a 24 fret Wenge fingerboard, punctuated with H. Jimenez DayStar inlays.

These bass guitars offer the flexibility of stringing through the body or top mount bridge style and a comfortable low profile NuBone® nut width. Two narrow Soap Bar style pickups are the tonal center of this bass which is enhanced by an active EQ via a mini toggle switch, when combined with the rotary pickup blend control offer a very wide range of tonal possibilities.

Finally, it includes a deluxe padded Moonwalk® gig bag, ensuring your instrument is protected and easily transported.

Rotary Pickup Blend Knob - This bass in the Camaleón Collection is equipped with a rotary pickup blend knob which provides a versatile way to shape your bass guitar's tone by controlling the balance between the two pickups. If you turn the pickup blend knob clockwise, you get more of the bridge pickup which is a brighter more aggressive tone. If you turn it counterclockwise, it gives more signal from the front pickup for a deeper warmer tone. By rotating the pickup blend knob, you can have many different tones quickly and easily.



LBS4-SB 4 string

LBS4-SB 4 string / LBS5-SB 5 string Satin Spalt Burst Bass Guitars (cont.)

Active EQ: This bass is equipped with an active/passive EQ section. Active EQ circuits require power from an onboard battery while passive circuits don't require power. Active EQ controls enable both cuts and boosts in tonal frequencies.

This H. Jimenez Camaleón bass guitar comes with mini switch to activate the active EQ or to play passively. The active EQ pre-amp is triggered by a mini switch in the control area.

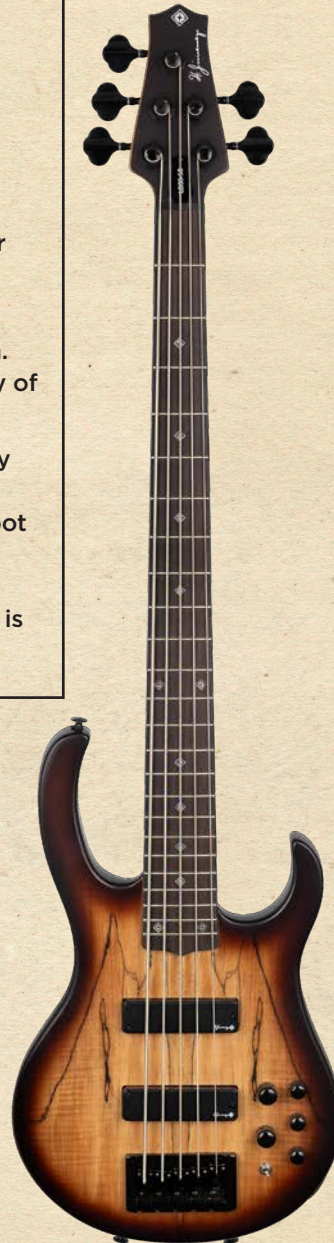
Mini Switch ON: (NOTE: Place the mini switch in the ON (down when in playing position) when plugging in, if passive operation is preferred, pull toggle the mini switch to the up position (OFF) after the amplifier is powered on.) A slight output boost may be noticeable. This switch activates the three rotary tone controls (Bass, Middle, and Treble). Being active, these controls allow you to increase or decrease bass, middle, or treble frequencies as per your liking.

Turning the EQ knobs, you'll feel a notch at the midpoint (center detent). This notch signifies the "Flat" EQ position. With the pre-amp engaged, you can easily create a variety of tones by adjusting these three Active EQ rotary knobs.

Mini Switch OFF: the bass becomes passive, and the rotary EQ knobs are deactivated. Some musicians prefer the unaltered tone directly from the pickup and utilize their foot pedals and/or amplifier for tone adjustments. This switch also provides a fail-safe option, allowing performances to continue uninterrupted should the battery fail - all it takes is a flick of the switch!

- Satin Spalt Burst Flat top Mahogany body with bevels
- SET NECK Satin Natural Maple neck
- Wenge fingerboard with white H. Jimenez Daystar™ Inlays
- 24 frets (4 str = 34" scale / 5 str = 35" scale)
- NuBone® nut width (4 str = 38mm / 5 str = 45mm)
- No binding
- All Black Hardware
- 2 Narrow Soapbar pickups,
- 1 vol, 1 blend knob w/ Passive or mini toggle for Active 3 band EQ
- Top mount bridge or string through body
- 3 strap buttons
- String through body or top load bridge
- D'Addario® strings
- Moonwalk® Deluxe Gig Bag

*See Page 19 for More Details



LBS5-SB 5 string



MOONWALK®

Moonwalk® Deluxe Bass Gig Bag

Each H. Jimenez Camaleón bass includes a deluxe black Moonwalk® gig bag with an H. Jimenez stitched logo. Designed from the top down for protection and convenience, your Moonwalk® gig bag is packed with dynamic features suited for any performer.

First you will notice extra heavy-duty zippers for durability and dependability. The gig bag has a thickly padded top and back as you would expect, but it even has thick padding on the sides to securely encase your bass in padded protection. It has reinforced stitching at all stress points for extra durability and peace of mind.

The exterior features two roomy and convenient zippered pouches for a variety of necessary musical accessories such as guitar cables, an extra string set, polish cloth, clip-on tuner, even a small pedal or two!

Inside the gig bag there is an adjustable velcroid neck pad with a securing strap as well as a headstock and body end removable pad to customize the fit to your liking. Also, there are interior resistant patches to protect it from string end picks into the interior.

To transport, it has a very comfortable thickly padded horizontal carry handle, adjustable padded backpack straps and even a vertical carry strap with an external body end bumper.

Note: H. Jimenez bass guitar bags are available for purchase separately. Check with your local H. Jimenez dealer or online for the model number H. Jimenez LBASSBAG.





COLECCIÓN CAMALEÓN

Limited Lifetime Warranty

H. Jimenez stringed instruments have a Limited Lifetime Warranty and are warranted by KHS America to be free from defects in materials and workmanship to the original purchaser, subject to all the following terms and conditions. Note: Warranty only applies to H. Jimenez stringed instruments sold by authorized H. Jimenez dealers in the United States.

Warranty Time Period:

The warranty provided herein is for the lifetime of the original retail purchaser with proper purchase documentation. This warranty does not apply to the gig bag, any factory-installed electronic components or tuning hardware. These items have a Warranty period of one (1) year from the date of the original retail purchase.

Limited Lifetime Warranty Does Not Cover the following: (a) any non-factory-installed electronic components or tuning hardware; (b) damage or defects due to alteration, modification, misuse, abuse, normal wear and tear, extremes of temperature or humidity or abnormal strain and negligence; (c) accidental or intentional damage; (d) damage by shipping; (e) the repair or replacement of expendable maintenance items including, but not limited to, strings, tuning machines, or scratched pickguards etc.; (f) normal fret wear; (g) plating on metal parts; (h) cracking or other damage to the finish; (i) any damage from accessories (synthetic straps, guitar stands or hangers etc.); (j) an Instrument whose serial number or model number has been defaced; altered, tampered with, or removed; (k) tonal characteristics (tone is a subjective matter and is not warranted); or (l) any instrument purchased from other than an authorized H. Jimenez dealer; (m) Any Product that was rented or leased before or after the original retail purchase of the Product (n) Product that was repaired or serviced by anyone other than a service facility authorized by KHS America.

SAVE YOUR RECEIPT! It is very important that you keep your original receipt of purchase. KHS America cannot perform any Warranty Service without a copy of your original sales receipt.

To Obtain WARRANTY SERVICE:

- Contact KHS America, 12020 Volunteer Blvd., Mt. Juliet, TN 37122
- Call KHS America 800-446-6010
- This is a summary of the warranty, to get more details or view the COMPLETE H. Jimenez Limited Lifetime Warranty

Go to hjimenezinstruments.com and click on Warranty: hjimenezinstruments.com/warranty/



[Visit Us Online!](#)

Follow Us on Social Media for
Insider Info and Contests!



[Full Warranty Info](#)

*Thank you for your purchase of an H. Jimenez Camaleón Bass guitar!
We hope you found this booklet informative and useful.*